



Helix Gardens, Brixton, SW2

4 bedroom house for sale

£1,125,000

Freehold

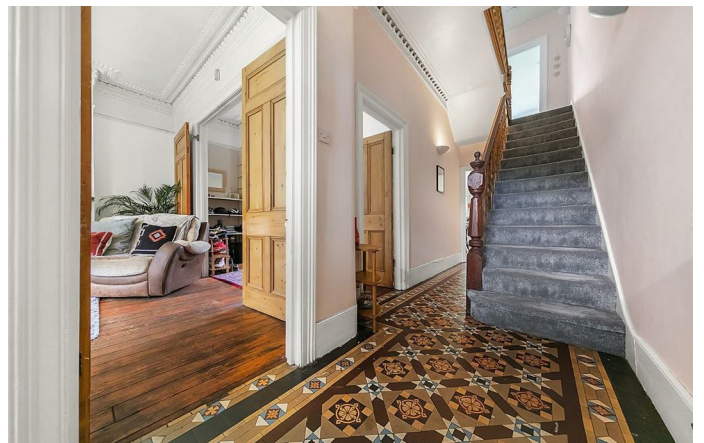
Property Details

On entering the property, the Victorian character rings true with original tiled flooring and high, corniced ceilings. The ground floor comprises a spacious dual-aspect reception room, complete with a large bay window, handsome feature fireplaces and garden access. Towards the rear of this floor, an attractive eat-in kitchen with plenty of space for a large dining table, a fully equipped contemporary kitchen and a desirable breakfast bar. The kitchen also leads out to the mature and sunny outside space, in which the new purchaser can enjoy the sun into the later hours of the day. Arranged over the first and second floors of the house, four generously sized double bedrooms, one of which spans the entire width of the house, whilst the others are all peacefully located overlooking the gardens at the rear. Both upper floors have their own contemporary bathrooms. This blank canvas presents a very unusual opportunity to stamp your own mark on a very exclusive spot close to the heart of Brixton, houses of this size, with this much outside space and within the Helix Gardens area are very rare to market.

Features

- Four double bedrooms
- Two bathrooms
- Victorian terraced house
- Over 1700 square feet of internal space
- Bright and airy throughout
- Characterful features
- Highly desirable road
- Private front and rear garden
- Close to the Brockwell Park
- Chain-free

Council tax band F EPC rating E (53)







4 Bedroom House

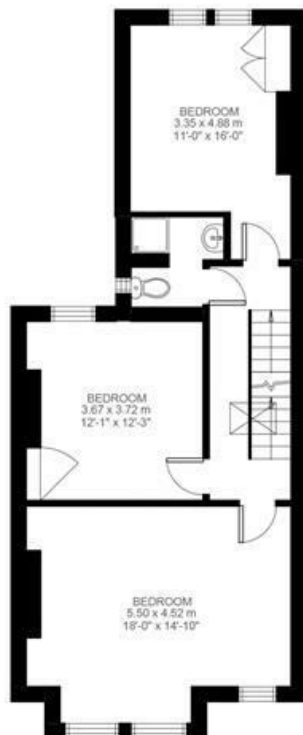
Approx internal area:

1768 sqft 164 sqm

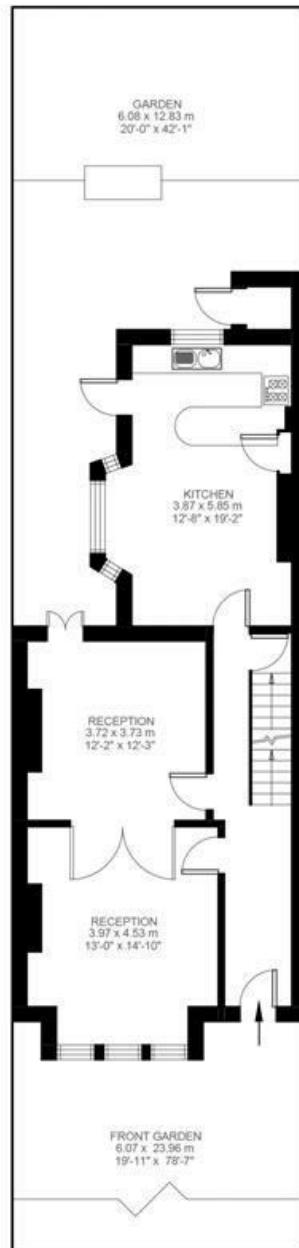
(EXCLUDING EAVES STORAGE)
EAVES STORAGE 27.00 SQ.M / 291 SQ.FT
INCLUSIVE TOTAL AREA 191.00 SQ.M / 2056 SQ.FT

While we do try our very best,
floor plans are produced as a
guide only and we take no
responsibility for the precise
accuracy with which any
property is represented

Helix Gardens



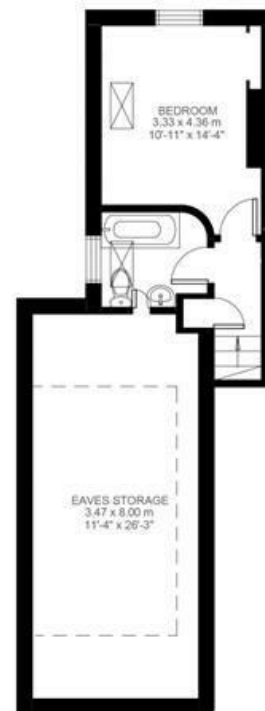
First Floor



Ground Floor



Basement



Second Floor



Helix Gardens, Brixton, SW2

